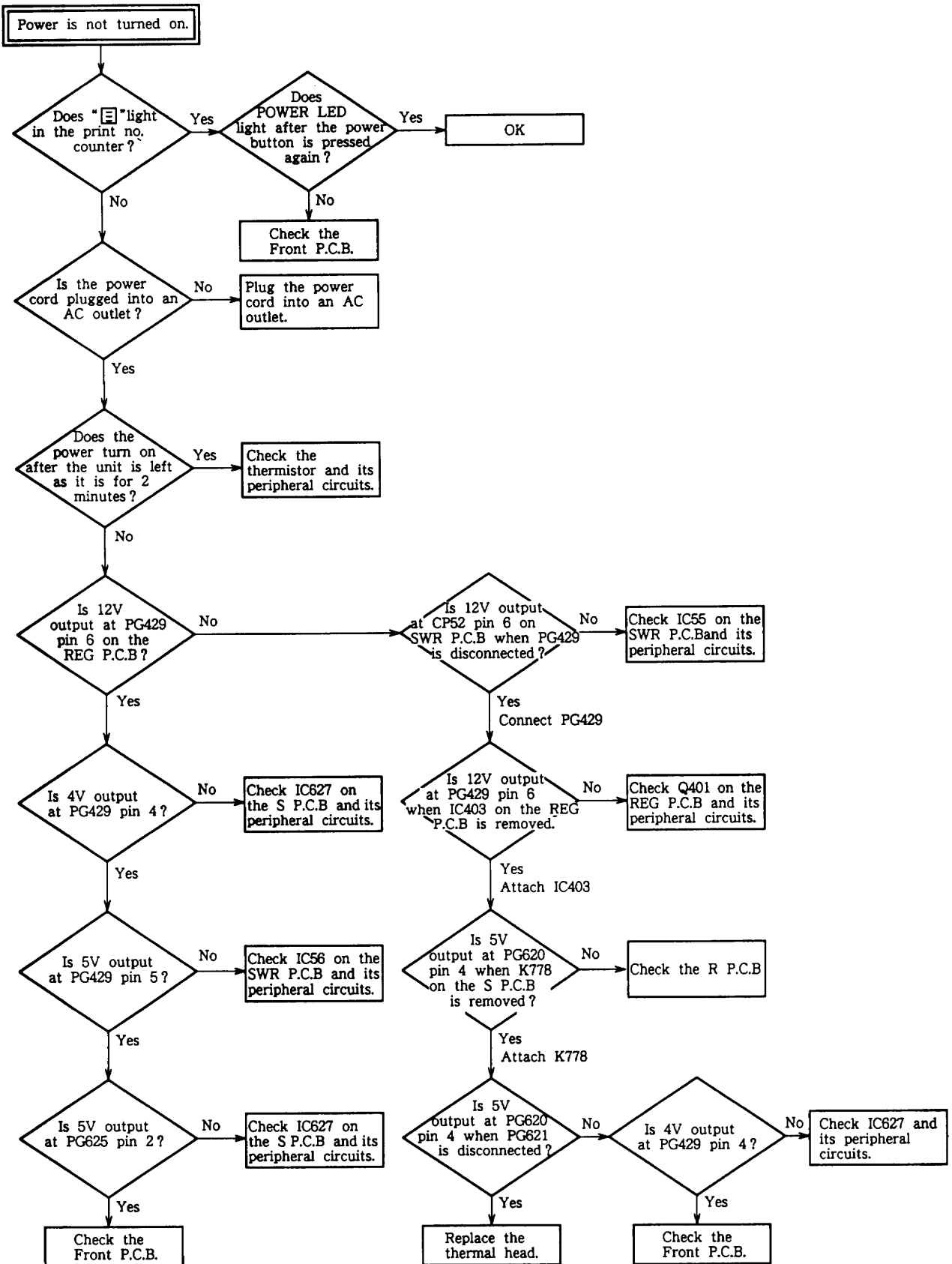
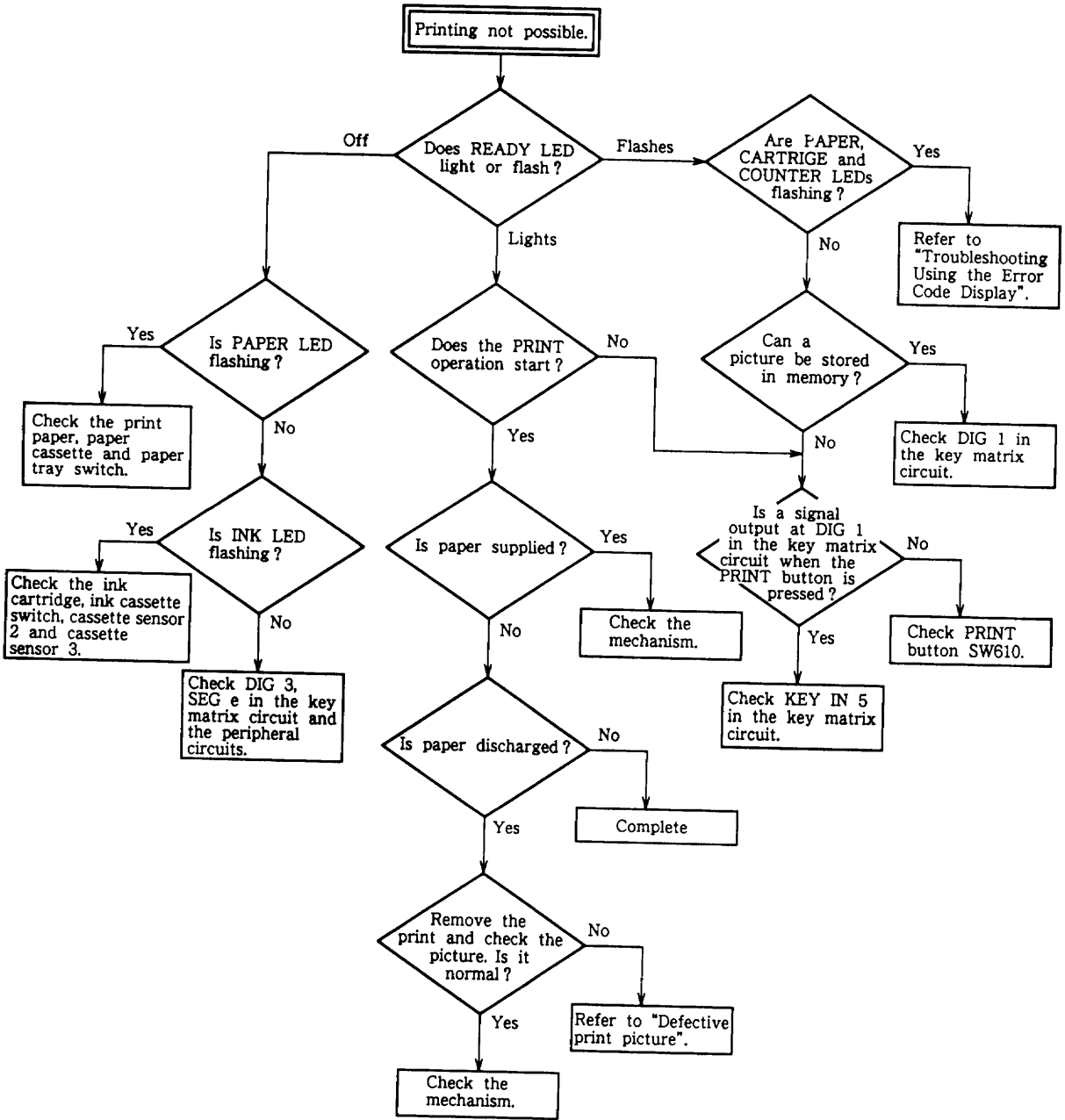


#### 4. TROUBLESHOOTING





Printing not possible.

Does READY LED light or flash?

Off

Flashes

Are PAPER, CARTRIDGE and COUNTER LEDs flashing?

Yes

Refer to "Troubleshooting Using the Error Code Display".

No

Does the PRINT operation start?

No

Can a picture be stored in memory?

Yes

Check DIG 1 in the key matrix circuit.

No

Is a signal output at DIG 1 in the key matrix circuit when the PRINT button is pressed?

No

Check PRINT button SW610.

Yes

Check KEY IN 5 in the key matrix circuit.

Check the mechanism.

Is paper supplied?

Yes

No

Is paper discharged?

No

Complete

Yes

Remove the print and check the picture. Is it normal?

No

Refer to "Defective print picture".

Yes

Check the mechanism.

Check the print paper, paper cassette and paper tray switch.

Is PAPER LED flashing?

Yes

No

Is INK LED flashing?

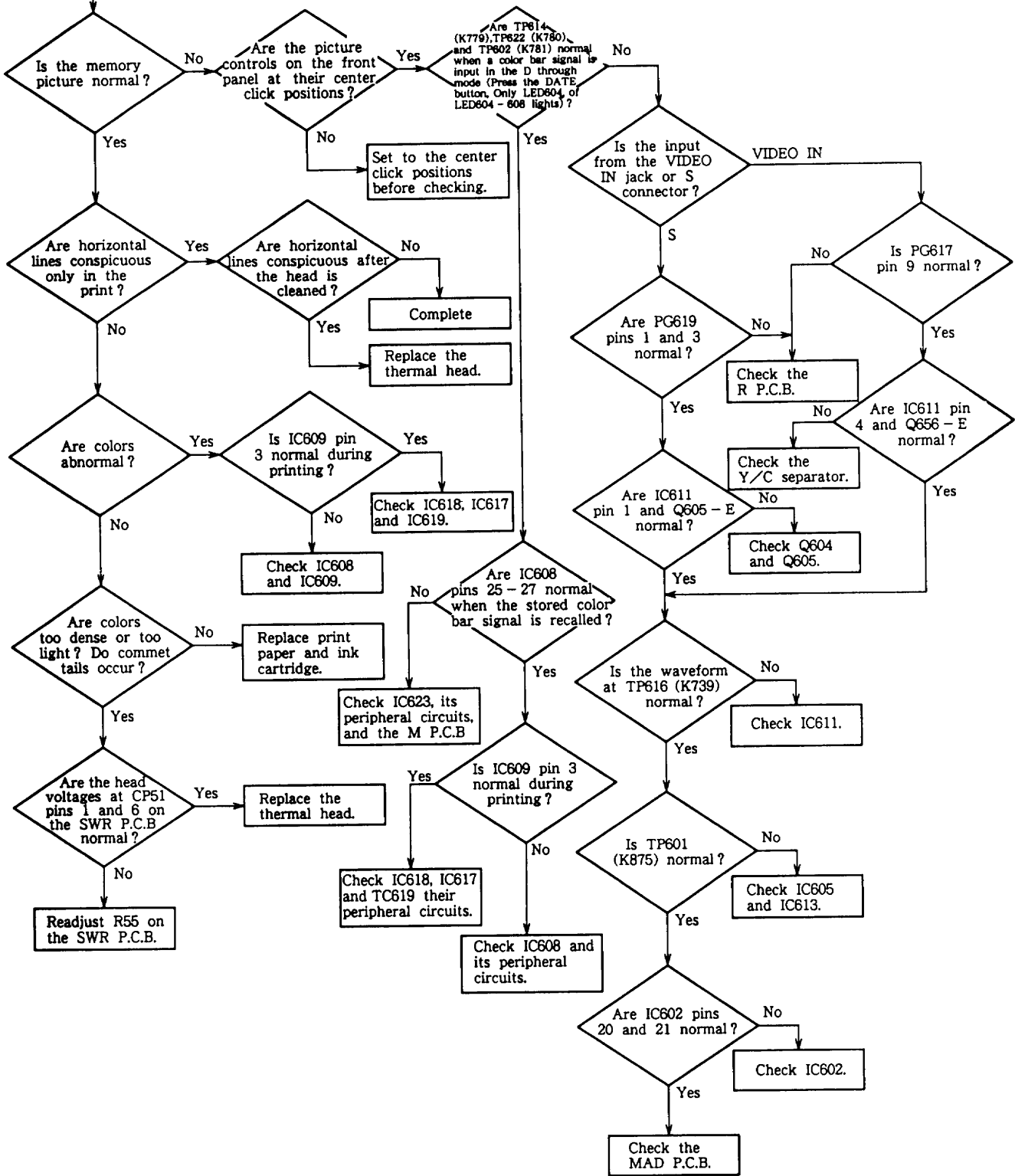
Yes

Check the ink cartridge, ink cassette switch, cassette sensor 2 and cassette sensor 3.

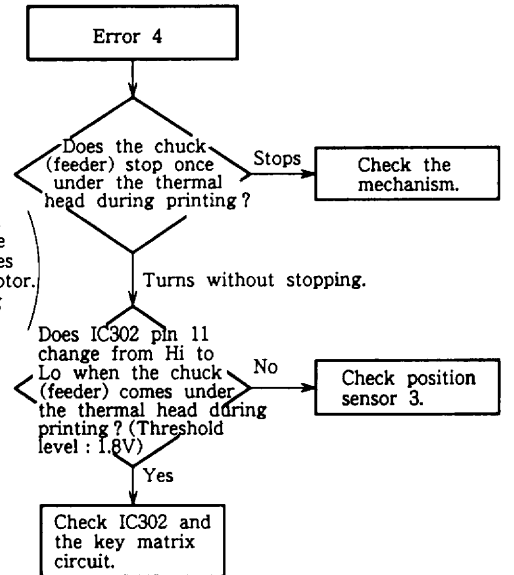
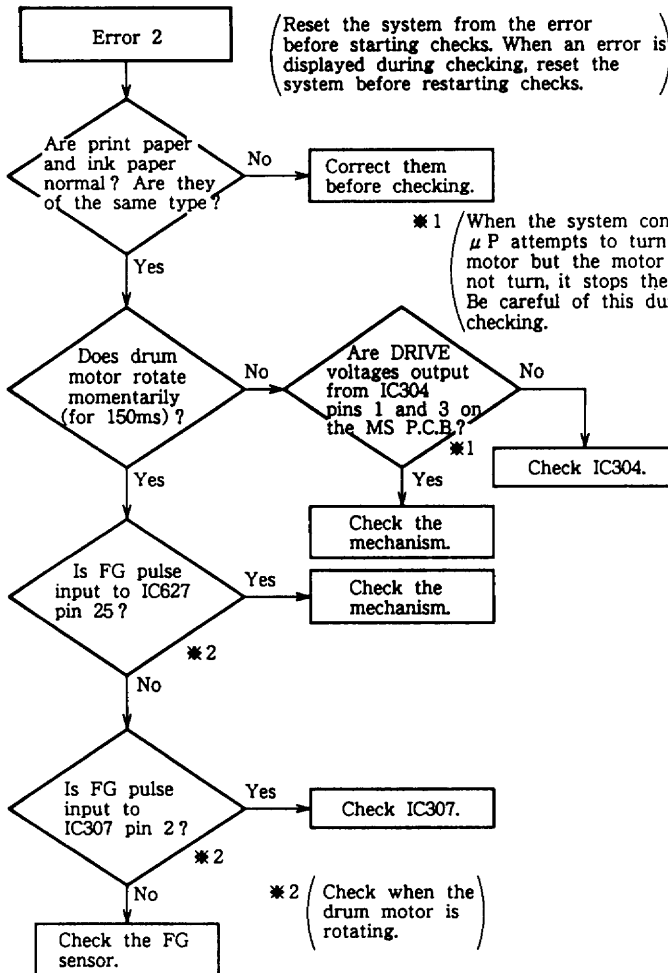
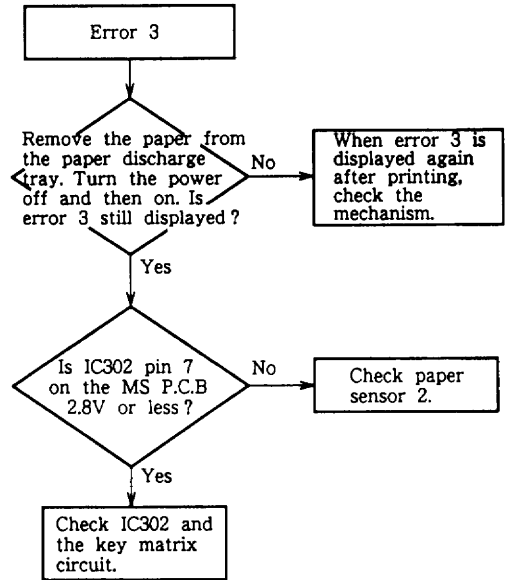
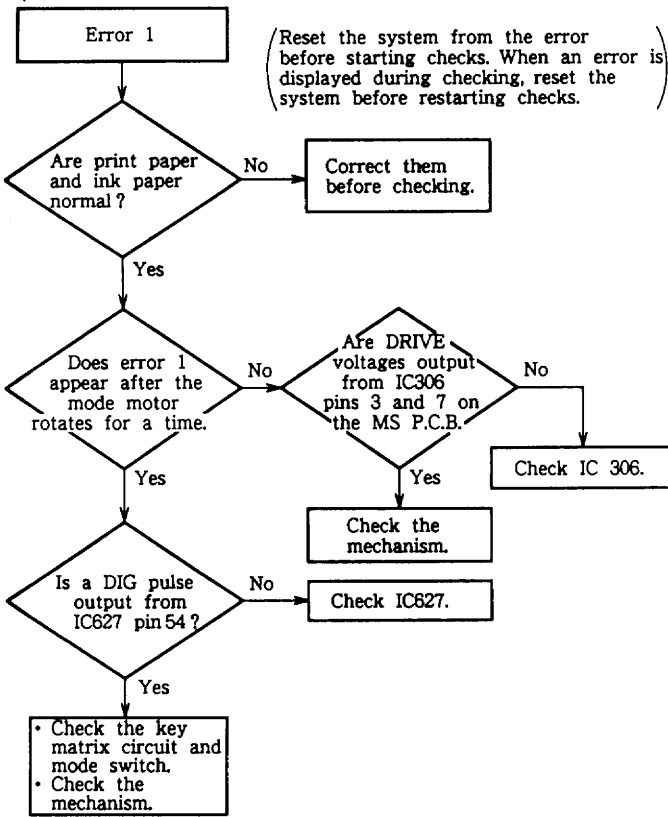
No

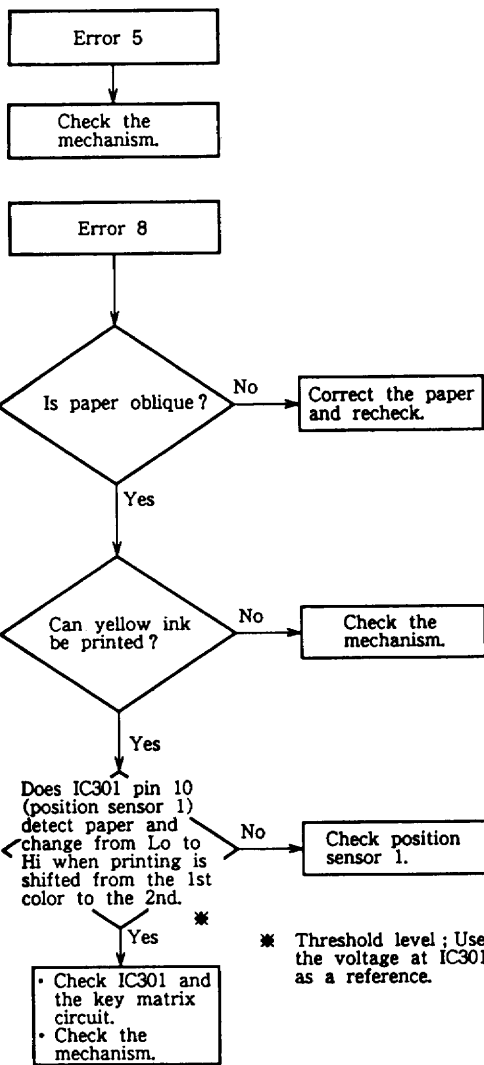
Check DIG 3, SEG e in the key matrix circuit and the peripheral circuits.

Defective print picture.



Troubleshooting Using the Error Code Display  
 (Refer to the list of error codes for the details of errors and the recovery method.)





\* Threshold level; Use the voltage at IC301 pin 11 as a reference.

